



# Alfa Laval 62-174/326 Air Blow Check Valve

## Control/Check valves

### Introduction

The Alfa Laval 62-174/326 Air Blow Check Valve is a spring-loaded, plug-style check valve used to evacuate pipelines of product or Cleaning-in-Place (CIP) media or to air-agitate product in pipelines, tanks and other vessels. It also can air dry the pipelines, which aids in the formation of a protective oxide film thereby promoting corrosion resistance throughout the pipeline system. The valve can help thoroughly mix and blend the product in tanks and other vessels through air agitation, improving product uniformity and product quality.

### Application

The 62-174/326 Air Blow Check Valve is designed to evacuate lines of product or CIP media, or for air agitation of product in tanks and other vessels across the dairy, food, beverage, home-personal care and chemical industries.

### Benefits

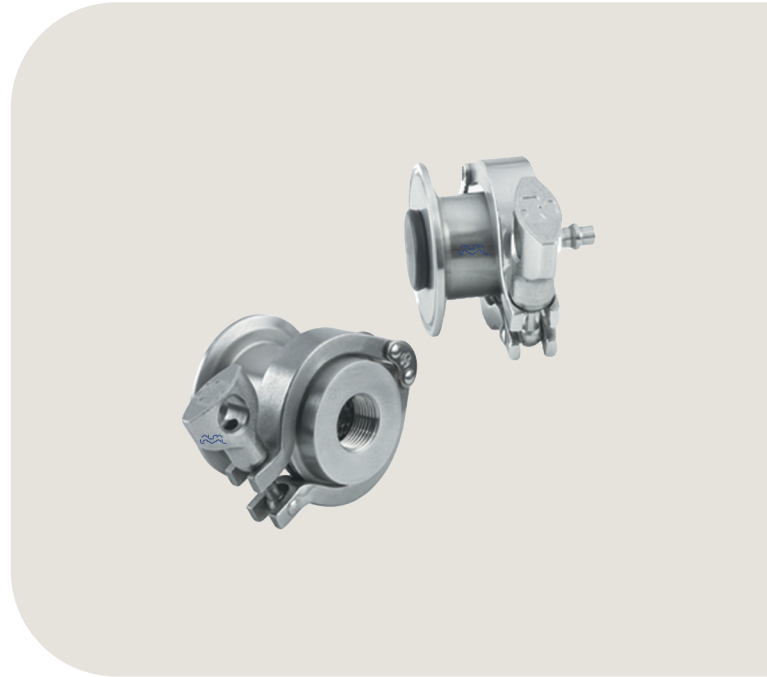
- Fail-safe operation – Prevents backflow of product or CIP media
- Quick assembly/disassembly with Tri-Clamp® connections for easy filter media replacement, cleaning or inspection
- Remote control possible by controlling the supply of air to the valve
- Rugged AISI 316 stainless steel construction with spherical EPDM-bonded plug assembly
- Conforms to 3-A Accepted Practices for applications that require final filtering of air prior to entering tank or pipelines

### Standard design

The Alfa Laval 62-174/326 Air Blow Check Valve consists of a valve body, gasket, adapter, plug assembly, return spring, stem guide, filter disc, perforated disc and buna gasket, washer and clamp.

The valve easily installs in any horizontal or vertical position on tanks or other vessels for product agitation using a Tri-Clamp, a gasket, and a mounting ferrule. No other fittings are required.

To evacuate the lines of product or CIP media, clamp the check valve on the end of the “Y” branch of a ball check valve



rather than installing the check valve directly in the line (see page 3 for typical installations).

### Working principle

Filtered air enters adapter (A) and exerts pressure on the valve plug assembly (B) causing it to move forward and unseat. The filtered air passes through the valve and around the valve plug assembly (B) entering the pipeline or tank. When the air pressure entering the adapter (A) is shut-off, the valve plug assembly is returned to its normally closed position by means of a return spring, preventing any backflow product or CIP media.

DISTRIBUTED BY  
**HARCO**  
ENTERPRISES LTD.  
1-800-361-5361

## TECHNICAL DATA

### Temperature

Temperature range: 20°F to 284°F

### Pressure

Pressure range: Varies based on style of clamp used. Contact Alfa Laval

Air pressure: 8-10 PSI minimum

## PHYSICAL DATA

### Materials

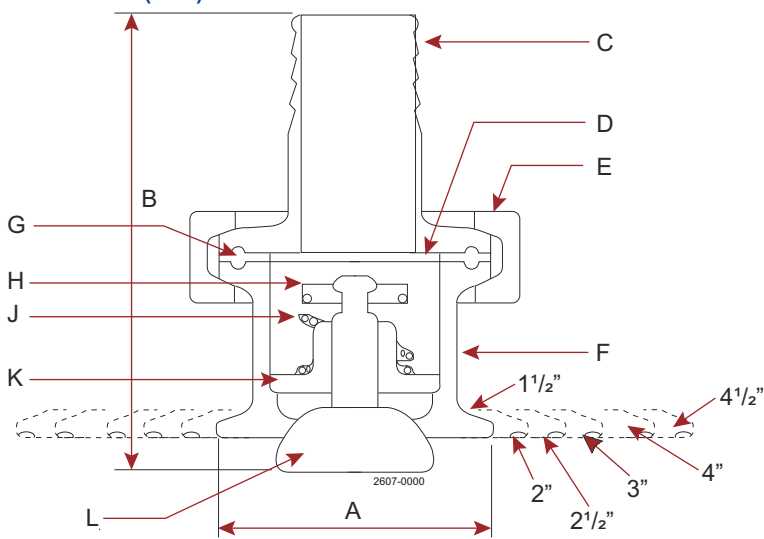
Product wetted steel parts: AISI 316 stainless steel

Other steel parts: AISI 304 stainless steel

Product wetted parts: EPDM

Other seals: Buna

### Dimensions (inch)



C = Adapter

D = Filter disc

E = Clamp

F = Valve body

G = Stainless steel perforated disc and  
buna gasket

H = Washer

J = Spring

K = Stem guide

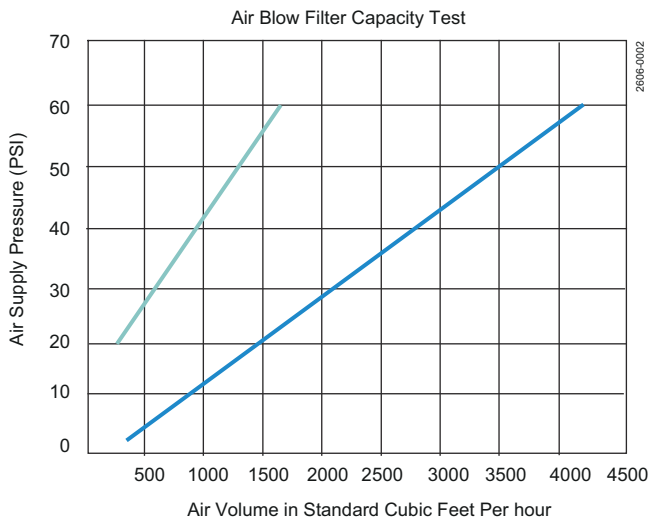
L = Plug assembly

Connection Size	A-OD (inches)	B-Overall Length					
		Model 62-174R			Model 62-326-Adapter-Size		
		"A" Adapter	"B" Adapter	"C" or "C1" Adapter	"A" Adapter	"B" Adapter	"C" Adapter
1½	1 <sup>15</sup> / <sub>16</sub>	2½	3	2	n/a	n/a	n/a
2	2½	2½	3	2	3 <sup>11</sup> / <sub>16</sub>	3 <sup>9</sup> / <sub>16</sub>	2 <sup>11</sup> / <sub>16</sub>
2½	2 <sup>1</sup> / <sub>16</sub>	2½	3	2	3 <sup>11</sup> / <sub>16</sub>	3 <sup>9</sup> / <sub>16</sub>	2 <sup>11</sup> / <sub>16</sub>
3	3 <sup>9</sup> / <sub>16</sub>	2½	3	2	3 <sup>11</sup> / <sub>16</sub>	3 <sup>9</sup> / <sub>16</sub>	2 <sup>11</sup> / <sub>16</sub>
4	4 <sup>11</sup> / <sub>16</sub>	2½	3	2	3 <sup>11</sup> / <sub>16</sub>	3 <sup>9</sup> / <sub>16</sub>	2 <sup>11</sup> / <sub>16</sub>
4½	5 <sup>1</sup> / <sub>8</sub>	2½	3	2	3 <sup>11</sup> / <sub>16</sub>	3 <sup>9</sup> / <sub>16</sub>	2 <sup>11</sup> / <sub>16</sub>



#### Note!

n/a = not available



**Options**

**Equipment**


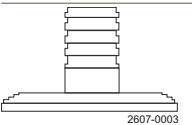
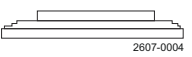
- SFY molded elastomers
- Air fittings - Air quick coupler
- Hose barb
- NPT tapped hole

**Ordering**



**Please state the following when ordering:**

- 62-174 (low volume)
- 62-326 (high volume)
- Tri-Clamp mounting connection size
- Type of air connection

**Variety of Adapters Available**

Adapter Type	For Model 62-174R	For Model 62-326
 <small>2607-0002</small>	"A" Adapter - For Air Line Quick Coupler (A) #37-80	(A) #37-161
 <small>2607-0003</small>	"B" Adapter - For 1" ID Rubber Hose (B) #14MPHR-1-S	(B) #14MPHR-2 x 1-S
 <small>2607-0004</small>	"C" Adapter - For NPT Female Connector "C1" Adapter (C) #23BMP-1½ x 3/8-S 3/8 NPT Female Connection (C1) #23BMP-1½ x ½-S ½ NPT Female Connection	(C) #23BMP-2 x ¼-S ¼ NPT Female Connection

## Replacement Media Ordering Information

Item		For Model 62-174R	For Model 62-326
 2607-0005	Filter Disc (fits all sizes)	Order #FA-1½-30C Sold 50/pkg. .3 MICRON	Order #FA-2-30C Sold 50/pkg. .3 MICRON
 2607-0006	SS Perforated Disc and Buna Gasket	Order #FAD-1½01 Sold in Single Units	Order #FAD-201 Sold in Single Units

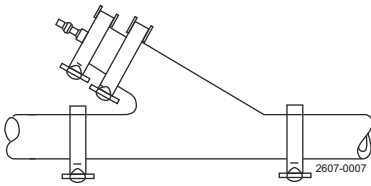


**Note!**

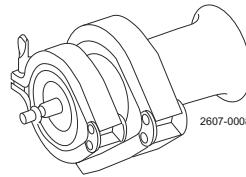
The Air Blow Check Valve must be used with a Filter Disc (Not furnished with unit). These filter discs are available in packages of 50.

### Typical Installations of Air Blow Check Valve and Disposable Air Filter Media

(62-156A-SIZE) includes 45BY and air blow assembly



For Product Agitation in Tank or Vessels



For Air Blowing Pipelines - Used with ball check valve #(45BY-Type Connection-Size) for pipeline evacuations of product or C.I.P solution.

This document and its contents are subject to copyrights and other intellectual property rights owned by Alfa Laval Corporate AB. No part of this document may be copied, re-produced or transmitted in any form or by any means, or for any purpose, without Alfa Laval Corporate AB's prior express written permission. Information and services provided in this document are made as a benefit and service to the user, and no representations or warranties are made about the accuracy or suitability of this information and these services for any purpose. All rights are reserved.

200006113-1-EN-US

© Alfa Laval Corporate AB

**How to contact Alfa Laval**

Up-to-date Alfa Laval contact details for all countries are always available on our website at [www.alfalaval.com](http://www.alfalaval.com)

DISTRIBUTED BY  
  
**ENTERPRISES LTD.**  
 1-800-361-5361

