



*Since 1964*

# AMPCO PUMPS FEATURED PRODUCTS CATALOG



ZP3 Series



AC+ Series



LF Series

Distributor/Supplier for



[www.harcosupply.com](http://www.harcosupply.com)



# ZP1 and ZP2 Series Pumps

These ZP Series rotary piston pumps are the best value in the industry and are dimensionally and hydraulically interchangeable with other leading brands.

## ZP1 & ZP2 Series POSITIVE DISPLACEMENT PUMPS

**ZP1 & ZP2 Series Pumps** are a line of rotary piston positive displacement pumps. On the PD pump the most significant improvement is a 304 Stainless Steel gear case on every pump. No more rusting, chipping and peeling. No more harassment from plant inspectors.

All stainless steel hardware prevents corrosion and stripped bolts, including a stainless steel gearcase. Along with 17-ph H-1150 shafts and 4-way mounting.

All ZP1 & ZP2 models can be rebuilt with over-sized rotors to extend the pump's useful life.

***Take advantage of Ampco's ZP2 Series for reduced clean-up time and inline cleanability.***

## Ampco Pump Parts

Harco has a complete inventory of spare parts for PD and Centrifugal pumps, including the new PD pumps in stock.

### Performance

- **Capacity Range:** 0.1 to 310 gpm (0.02 to 70.4 m<sup>3</sup>/hr)
- **Pressure Range:** up to 500 psi/ 34 Bar
- **Temperature Range:** -40°F to +300°F (-40°C to +150°C) Note: Hot clearances required for high temp operation
- **Viscosity Range:** 28 to 910,000 SSU (1 to 200,000 cSt) Note: Consult factory for application greater than 910,000 SSU/200,000 cSt
- Chocolate clearances available



# ZP3 Series Pumps

**Ampco's ZP3 Series positive displacement pumps are the best value in the industry.**

**Ampco's ZP3 offers multiple advantages over the competition:**

- Front-loading seals for ease of maintenance
- In-line cleanability without further modifications
- New rotor case design for maximum efficiency
- Tungsten carbide seal faces for longer life

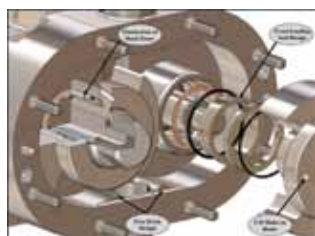
Ampco Pumps Company



**ALL ZP SERIES PUMPS INCLUDE A STAINLESS STEEL GEAR CASE, 17-4 SHAFTS, AND HELICAL GEARS**

**As an added bonus:**

- The entire gear case, including shafts, is identical to ZP2 style pumps with 100% parts interchangeability
- Existing ZP2 pumps (and our competitors similar pumps) can be upgraded to the ZP3 design with new rotors, new seals and re-machining the existing rotor case



**Save time, money, training resources and inventory expense by switching or upgrading to a ZP3 pump**

- Front-loading seal design offers improved CIPability with turbulent flow to seal faces
- Elimination of dead zones in shaft bore and CIP holes in body hub improves CIPability and pump efficiency
- Custom free drain design improves CIPability while
- Maintaining maximum pump efficiency
- CIP holes in rotor ensure turbulent flow to cover hub

**Contact Harco for your Ampco ZP3 pump or ZP3 replacement part inquiries.**

# ZP4 Series Pumps

**The Most Compact Circumferential Piston Pump in the Industry**

Harco proudly presents the **NEW Ampco ZP4 Series positive displacement pump**, a compact marvel engineered for unparalleled precision, reliability, and efficiency in positive displacement pumping. In this category of sanitary pumps, the Ampco ZP4 pumps compact design stands out, ensuring optimal performance for low-flow and dosing applications.

What truly distinguishes the Ampco ZP4 Series positive displacement pumps from other options are its innovative ZERO rotor to rotor contact design and robust stainless-steel construction. This combination not only enhances durability but also ensures a reliable and efficient pumping process.

Furthermore, the Ampco ZP4 Series circumferential piston pump is crafted to eliminate any potential for product zone contamination arising from pump wear. Making it an ideal choice for applications where maintaining product integrity is paramount.

**Contact Harco for your Ampco ZP4 pump or ZP4 replacement part inquiries.**



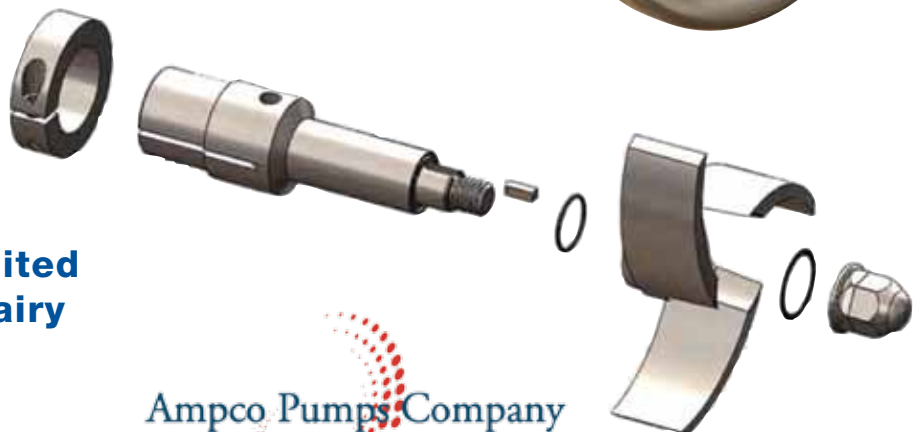
Ampco Pumps Company

# AC+ Series Sanitary Centrifugal Pump

AC+ pumps are an economical solution to a wide range of sanitary pump applications, they are the first significant improvement in the traditional "C Series" style pumps in over a quarter century. These pumps offer an improved shaft design comparable to more expensive pumps while maintaining the hydraulic characteristics and external dimensions of the traditional AC Series. AC+ pumps are in conformance with 3A sanitary standards.

## AC+ Series Sanitary Pump

- Offers improved shaft design - Clamped stub shaft and threaded impeller nut provide more stable performance
- External dimensions are the same as AC pumps - no need to change piping
- Hydraulic performance is identical to the AC pumps
- 316L Stainless Steel construction
- Stainless Steel adapter
- Parts are 100% interchangeable with competing brands
- One week delivery
- Economical favorite



**Ampco AC+ centrifugal pumps are perfectly suited for beverages, juice, dairy and pharmaceutical.**

Ampco Pumps Company

**For more information, call  
1-800-361-5361 or e-mail  
[sales@harco.on.ca](mailto:sales@harco.on.ca).**

# LC/LD/LF Series Centrifugal Pumps

- Dimensionally, hydraulically and parts are interchangeable with **Fristam**
- Stainless Steel Motor Adaptors
- Stainless Steel Motors Available
- Competitive Prices



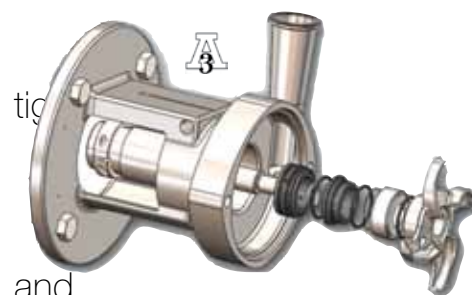
LF SERIES Pump -  
front loading seal design.

## LC/LD/LF Series Pumps

Ampco now offers three lines of high efficiency centrifugal pumps that meet all your sanitary requirements.

- New LF Pumps offer a front loading seal design for ease of maintenance and are easily convertible to a double seal without changing any other parts.
- High efficiency design and performance offers gentle product handling capability up to 1200 cps.
- Heavy-wall construction, manufacturing tolerances, dynamically balanced impellers and a self-aligning shaft minimize vibration promote longer seal life.
- Standard adapters are made of 304 SS to resist corrosion.

Ampco Pumps Company



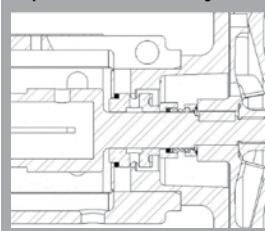
Ampco Series	Comparing Fristam Series
LC	FPX
LD	FP
LF	FPR
SP	FZX

### STANDARD SEAL OPTIONS

#### LC SINGLE SEAL

Standard Material:

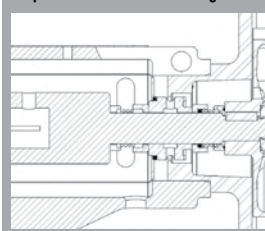
- Silicon carbide/Carbon/Vitom
- Optional chrome oxide rotating element



#### LD SINGLE SEAL

Standard Material:

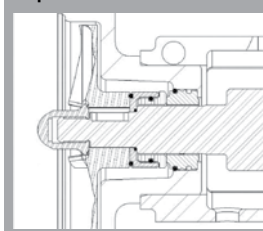
- Silicon carbide/Carbon/Ceramic/Vitom
- Optional chrome oxide rotating element



#### LF SINGLE SEAL

Standard Material:

- Silicon carbide/Carbon/Vitom
- Optional double seal



Ampco pumps are dimensionally and hydraulically interchangeable with other leading brands.

# CB+ Craft Brew Pump

## NEWEST ADDITION TO THE AC SERIES OF PUMPS

Ampco's CB+ pump was designed specifically for the craft brewing industry and the aficionados who are passionate about creating their signature brews, not dealing with leaking pumps.

Ampco's new CB+ features a sanitary internal seal design that will keep seal faces cooler and minimize product buildup.

Dry running external mechanical seals on standard "C Series" style pumps is unavoidable when pumping wort at temperatures near boiling. Flashing will occur between seal faces causing premature seal wear and allow solids to build up between the faces resulting in leaking. The CB+ design minimizes these problems in several ways:

- The internal seal is submersed in the product to promote cooling.
- Pressure within the pump will create higher closing force on the balanced seal faces to minimize product buildup.
- The internal spring will help agitate the wort solids keeping them from pooling at the seal faces.

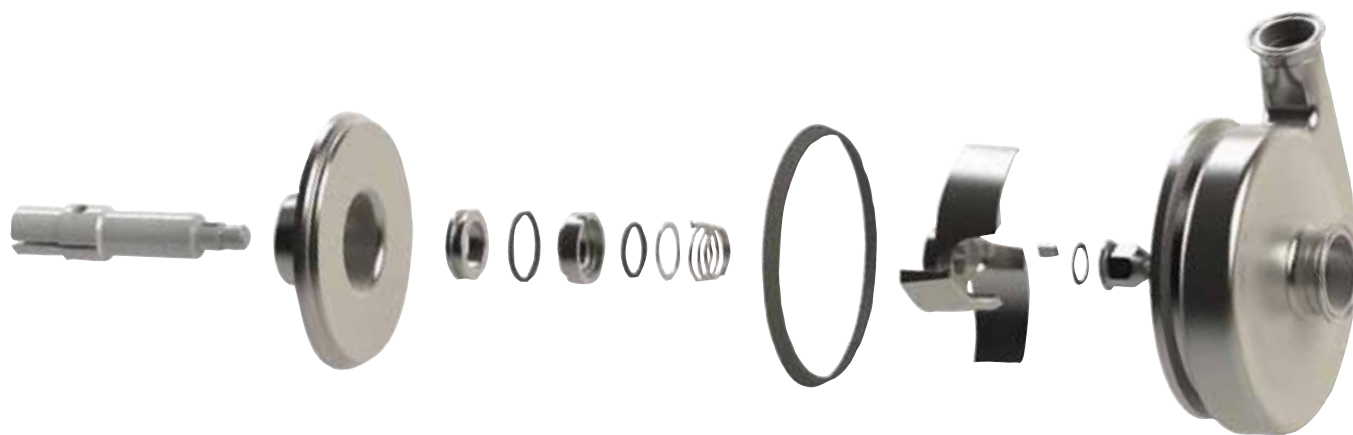


# CB+ Craft Brew Pump is Engineered for Craft Brewery Efficiency

New CB+ pumps are hydraulically and dimensionally interchangeable with existing C Series pumps. There is no need to change piping or purchase a pump that costs twice as much.

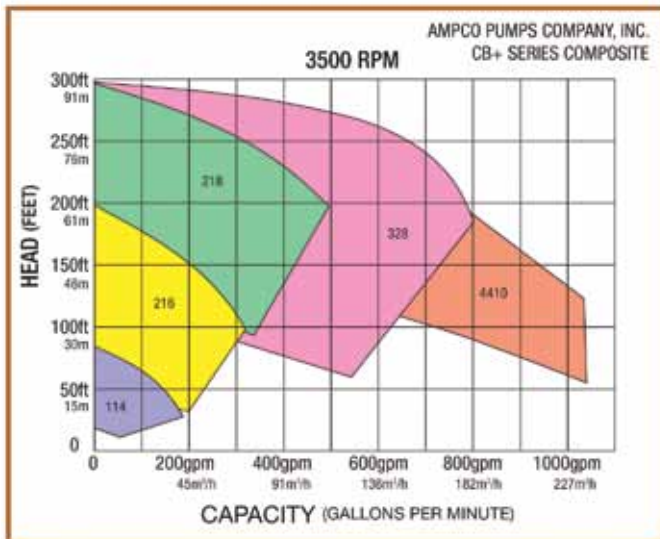
Ampco offers two CB+ conversion kits, allowing existing C Series and AC+ pumps to be converted to CB+ pumps.

- CB+1: Convert an Ampco AC+ pump to a CB+ simply by replacing the seal and backplate (CB+1 conversion kit).
- CB+2: Convert Ampco AC and competing C Series pumps with the CB+2 conversion kit. (includes backplate, seal, stub shaft, collar, o-ring, and impeller nut).



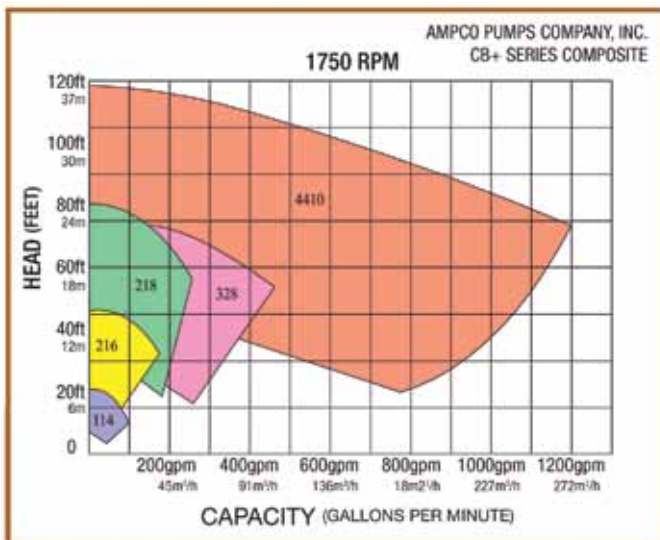
# CB+ Craft Brew Pump

Low Cost, 316L Stainless Steel Construction and Stainless Steel Adaptors are Standard



Models	Inlet	Outlet	Maximum Impeller
CB+ 114	1.5" - DIN 40	1.5" - DIN 40	4" - 102mm
CB+ 214	2.0" - DIN 50	1.5" - DIN 40	4" - 102mm
CB+ 216	2.0" - DIN 50	1.5" - DIN 40	6" - 152mm
CB+ 316	2.5" - DIN 65	1.5" - DIN 40	6" - 152mm
CB+ 218	2.0" - DIN 50	1.5" - DIN 40	8" - 203mm
CB+ 318	3.0" - DIN 80	1.5" - DIN 40	8" - 203mm
CB+ 328	3.0" - DIN 80	2.0" - DIN 50	8" - 203mm
CB+ 428	4.0" - DIN 100	2.0" - DIN 50	8" - 203mm
CB+ 4410	4.0" - DIN 100	4.0" - DIN 100	10" - 254mm
CB+ 6410	6.0" - DIN 150	4.0" - DIN 100	10" - 254mm

Construction Materials: All models are made of 316L stainless steel



For more information,  
call us at 1-800-361-5361  
or e-mail us at  
[sales@harco.on.ca](mailto:sales@harco.on.ca).

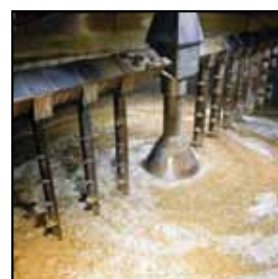


# Cellar Cart

## FOR BEER & CIP



Ampco's Cellar Cart for beer and CIP is a lightweight, robust two-wheeled cart designed for maximum mobility. Constructed of stainless steel tubing, the Cellar Cart has solid polypropylene wheels and is corrosion resistant. Each versatile cart is built to customer specifications and can include any of Ampco's centrifugal pumps, positive displacement pumps, or blenders. Carts are ergonomically designed for ease of use in tight spaces.



**Model CB56 / AC+ 114**  
with NEMA 4X VFD.  
Shown with a stainless steel  
1.5 HP 3500 RPM motor.



**Model CB180/ AC+ 216**  
with NEMA 4X VFD.  
Shown with a wash-down  
5 HP 3500 RPM motor.



**For more information, call  
1-800-361-5361 or e-mail  
[sales@harco.on.ca](mailto:sales@harco.on.ca).**

# Wine and Must Cart

Ampco's Wine & Must Cart comes equipped with the durable Ampco ZP1 Series positive displacement pump.

## Typical applications:

- Wine/Juice Transfer
- Barrel Work
- Filter Feed
- Bottling/Filler Supply

motors with 20:1 turndown ratio

## Common Pump and Motor Options:

- Single and double mechanical seals
- Multiple connection options
- Washdown and stainless steel motor enclosures
- NEMA or IEC motor frames

## Standard Pump Features:

- 316L stainless steel wetted parts with Alloy 88 non-galling rotors
- 304 stainless steel gear case
- Single O-ring seals
- Tri-clamp connections
- Bearing protection package
- High efficiency TEFC

Ampco Pumps Company



# Wine & Must Cart Delivers Portable Transfer Technology

**Available in four standard model sizes and are used for applications including wine and juice transfer, barrel work, filter, filling, and bottling supply.**

## Control Features:

- NEMA 4X VFD
- Remote speed potentiometer
- Membrane control with digital display
- Wash-down approved wiring, cord and plug options are available upon request

## Cart Features:

- 304 stainless steel construction
- 10" foam filled tires with grease-able roller bearings

MODEL	Inlet / Outlet size	Motor	Flow / Max	Pressure / Max
WC-30	1.5"	2 HP / 1.5 kW	30 gpm / 7 m <sup>3</sup> /h	60 psi / 4 bar
WC-40	2"	3 HP / 2.2 kW	40 gpm / 9 m <sup>3</sup> /h	60 psi / 4 bar
WC-60	2.5"	5 HP / 4 kW	70 gpm / 16 m <sup>3</sup> /h	80 psi / 5.5 bar
WC-130	3"	7.5 HP / 5.5 kW	135 gpm / 31 m <sup>3</sup> /h	60 psi / 5.5 bar

Built to withstand harsh working environments – inside and out – the Ampco Wine and Must Cart can stand up to whatever the application.



**For more information, call us at 1-800-361-5361 or e-mail us at [sales@harco.on.ca](mailto:sales@harco.on.ca).**





# Product Line Card

Supply House to the Processing Industries Since 1964

Harco partners with leading manufacturers in the industry to bring you an innovative range of sanitary and hygienic processing equipment and supplies. With experience in design, manufacturing and support, our partners are selected for their quality, reliability, and advanced products.

