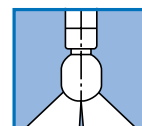


## TANKO® SF40

The AWH TANKO® SF40 is authorized to carry a 3-A symbol rotary spray device for tank and vessel cleaning. It is designed with a 270° upward spray, is self-cleaning, and easy to dismantle for inspection with only a few components.

The spray head rotates on a hydrodynamic bearing and is lubricated by the cleaning solution during the cycle. There are no oils, greases, or other lubricants needed.

All AWH Spray Devices come with a Material Test Report (MTR).



270°↑

### QUICK TIPS

#### What orientation should I mount the SF40 in?

The standard hydrodynamic bearing is intended for vertical positioning. If other installation positions are required, contact Sani-Matic for other options.

#### Strainer Sizing

Use the below recommendations for sizing a strainer to use upstream of rotary and jet spray devices.

**WedgeWire Element:** 0.007" or smaller

**Mesh Overlay:** 80 mesh or higher

**Filter Tube:** 180 micron or smaller

### GOOD TO KNOW

- **Materials:** 316Lss and TECAPEEK® natural

- **Maximum Working Temperature:** 203 °F



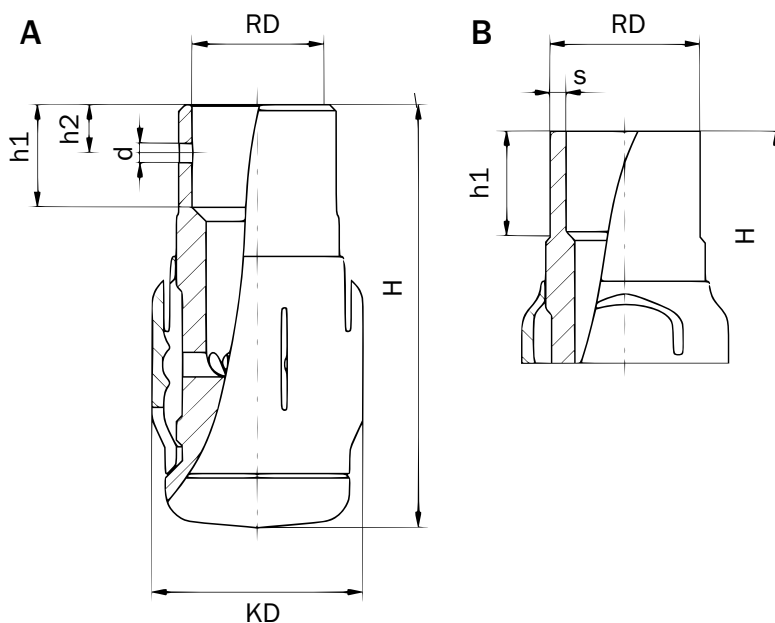
- Self-lubricating slide bearing

- Meets 3-A Standard 78-03 requirements

## TANKO SF40 Rotary Spray Device

Model	Spray Pattern	Connection Size	Connection Style	Flow (gpm)	Pressure (psi)	Max. Cleaning Radius (ft)	Finish	Part #
TANKO SF40	270° Upward	0.75"	SC	16 - 22	22 - 44	4.9	32 µin Ra	053665
TANKO SF40	270° Upward	1.00"	BW	16 - 22	22 - 44	4.9	32 µin Ra	053664
Part #	H	KD	RD	h1	h2	d	S	
053665	2.76"	1.38"	0.76"	0.63"	0.31"	0.13"	-	
053664	2.76"	1.38"	1.00"	0.67"	-	-	0.065"	

NOTE: Green highlighted cells indicate stocked items.



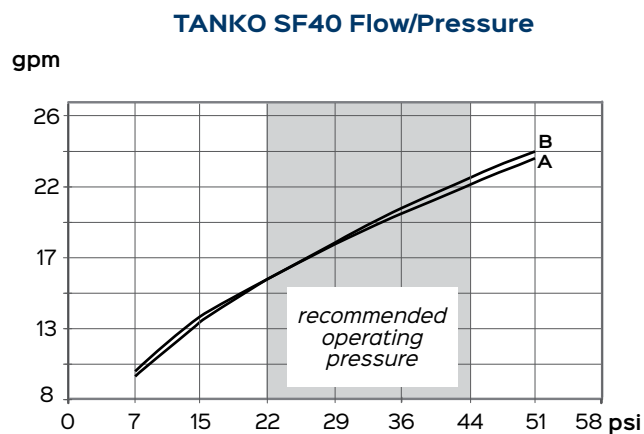
TANKO SF40 Dimensional Information  
(A - Slip Collar, B - Butt Weld)

## TANKO SF40 Replacement Parts

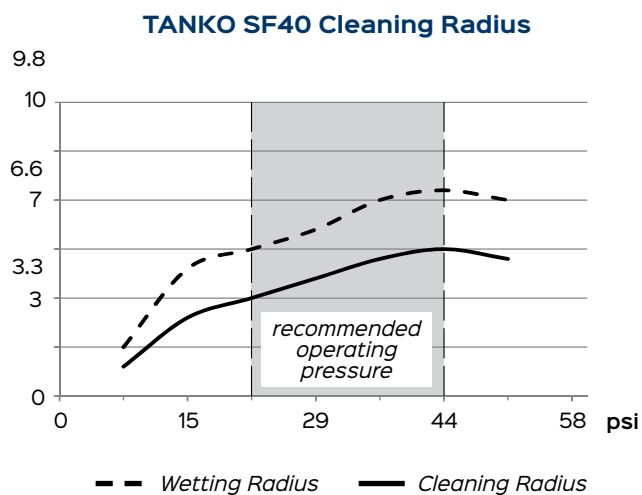
Model	Description	Qty.	Connection Style	Part #
TANKO SF40	Wear Parts Kit, Wire Retaining Pin	4 Pieces	SC	053929

NOTE: Green highlighted cells indicate stocked items.

## TANKO SF40 Flow/Pressure and Cleaning Radius Charts



A: 270° Upward Weld-On B: 270° Upward Clip-On



-- Wetting Radius — Cleaning Radius